

Universal LED Display NLP-1000 / 2000

Place our compact LED Display onto any space you wish.

- 768(W) x 1600(H) x 163(D) mm
- Mini info display (cost effective and highly efficient product)
- Direct simultaneous demonstration of government or administration related information with various units
- Good solution for displaying fine dust, weather status, advert/ expected natural disasters and more.
- Supports Text+Picture, Video (Media player)



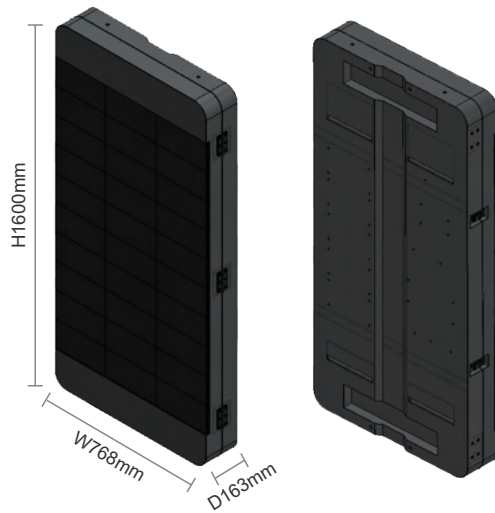
- Supports Schedule Management programs
 - Self-operating automatic turn on and off throughout a year.
 - Uploadable content via Internet connection
- User-friendly installation guide
 - Wall mounting /Floor stand
- Installation area
 - Populated, concentrated and small-scale administrative institutions
 - Information bureau in front of municipal authorities
 - Safety announcements to prevent potential disasters and blind spots



< Essential functions >

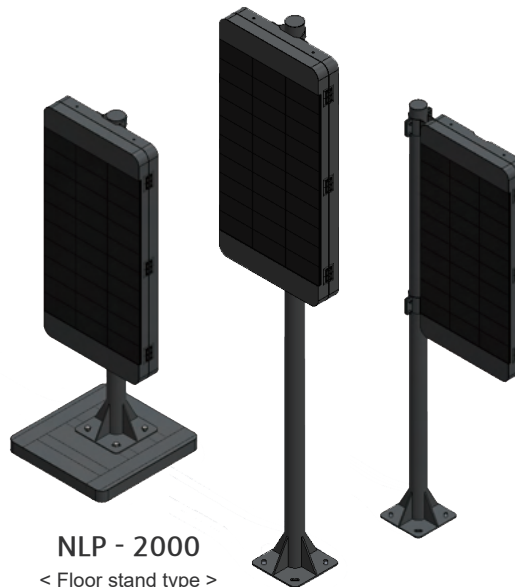


< Disaster safety blind spot 'Safety notification electronic display' >



NLP - 1000

< Wall Mount Type - Front & Rear >



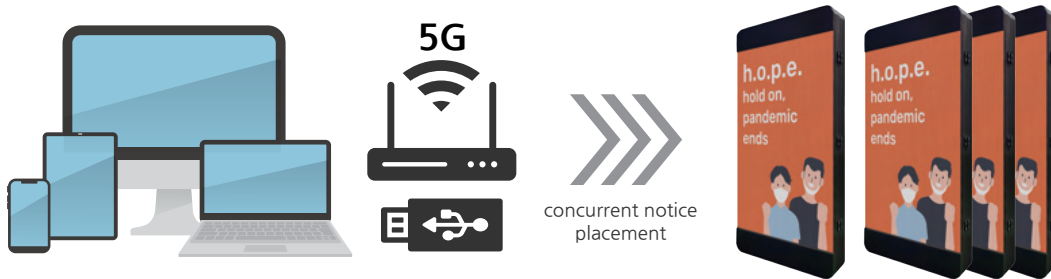
NLP - 2000

< Floor stand type >



< "Notification Board" in front of the government office >

Multi small-group concurrent notice placement



Connection	Distance	Remarks
USB	5m	In connection to another nearby device
LAN	∞	Applicable with fixed IP address and LAN cable irrespective to distance
WiFi	Within 100 meters	Connectible with WiFi-repeater or WiFi router in a relevant distance
5G	∞	USIM insertion and mobile data usage

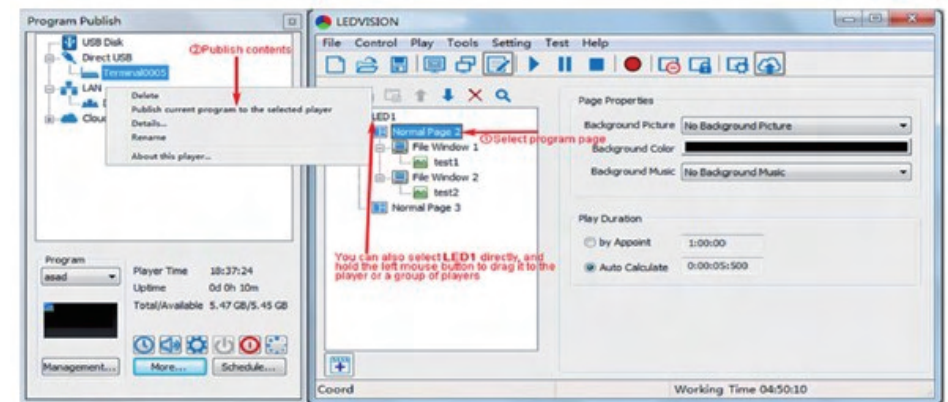
Content creation tool and notice upload process

Self-Upload

- Easy Management with Software
- Display (Monitor) addition or removal
- Text and Video placement / Specifying Edit Location
- Setting self-operating time by schedule

Proxy upload method

- ① Staff member: relaying information by message, email etc.
- ② NXO Staff member : Edit the content and send to the person in charge.
- ③ Once the staff receives, the notice will be updated by Internet



< CMS Software Example >

Specifications

LED Lamp Parameters (Test Condition : 25°C)						
Product Model	Color	IF(mA)	Rd(nm)	Iv(mcd)	Vf(V)	View Angle
		TEST	Typ.	Typ.	Typ.	(deg.)
Top SMD2525 2.4 x 2.6 x 2.1	Red	20	620-625	490	2.0	110
	Green	20	520-525	1250	3.1	110
	Blue	20	465-470	290	3.1	110

Module Specification		
1	Pixel Pitch (mm)	4
2	LED Package	SMD2525
3	Pixel Density (dots/m ²)	62500
4	Maximum Brightness (cd/m ²)	≥5000
5	Module Size (mm)	W256 x H128
6	Module Resolution (dots)	W64 x H32
7	Scanning Mode	1/8

Screen Specification		
1	Maximum Power (W/m ²)	900
2	Reference Average Power (W/m ²)	300
3	View Angle	H120°/V120°
4	Optimal Viewing Distance (m)	≥4m
5	Frame Frequency (Hz)	50/60
6	Fresh Frequency (Hz)	≥1920
7	Brightness Control	Support automatic adjustment
8	Gray Scale (Bit)	13
9	Operating Voltage	AC220V ± 10%
10	Defect Rate	≤0.00001
11	Life Span	≥100,000 hours
12	Brightness Uniformity	<3%
13	Operating Temperature	-20°C~50°C
14	Operating Humidity	10%~90%
15	Control System	Asynchronous
16	Input Signal (Option)	HDMI

Cabinet Specification		
1	Cabinet Size (mm)	W768 x H1600 x D160
2	Display Size (mm)	W768 x H1280 x D160
3	Cabinet Resolution (dots)	W192 x H320
4	Module Quantity (pcs)	30
5	Material	Iron
6	Maximum Power (W)	about 700
7	Cabinet Weight (Kg)	60Kg

* The specification is subject to change without prior notice.